

**AFP Antibody**  
**Rabbit mAb**  
**Catalog # AP91139**

## Specification

---

### AFP Antibody - Product Information

Application	WB, IHC, FC, ICC, IP
Primary Accession	<a href="#">P02771</a>
Clonality	Monoclonal
<b>Other Names</b>	
Alpha fetoglobulin; Alpha fetoprotein precursor; FETA; HPAFP;	
Isotype	Rabbit IgG
Host	Rabbit
Calculated MW	68678 Da

### AFP Antibody - Additional Information

Dilution	WB~~1:1000 IHC~~1:100~500 FC~~1:10~50 ICC~~N/A IP~~N/A
Purification	Affinity-chromatography
Immunogen	A synthesized peptide derived from human AFP
Description	Alpha-fetoprotein (AFP) is a 65 kDa glycoprotein found in the mammalian fetal liver, yolk sac, and GI tract. In normal adult cells, p53 binds to the repressor region of the AFP gene, thereby blocking transcription. Mutations in both p53 and $\beta$ -catenin are associated with aberrant expression of AFP. Research studies have shown that elevated serum AFP levels are predictive of hepatocellular carcinoma . Rabbit IgG in phosphate buffered saline , pH 7.4, 150mM NaCl, 0.02% sodium azide and 50% glycerol. Store at +4°C short term. Store at -20°C long term. Avoid freeze / thaw cycle.
Storage Condition and Buffer	

### AFP Antibody - Protein Information

**Name** AFP

**Synonyms** HPAFP

**Function**

Binds copper, nickel, and fatty acids as well as, and bilirubin less well than, serum albumin. Only a small percentage (less than 2%) of the human AFP shows estrogen-binding properties.

**Cellular Location**

Secreted.

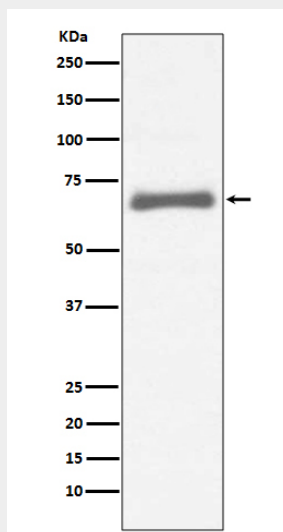
**Tissue Location**

Plasma. Synthesized by the fetal liver and yolk sac

**AFP Antibody - Protocols**

Provided below are standard protocols that you may find useful for product applications.

- [Western Blot](#)
- [Blocking Peptides](#)
- [Dot Blot](#)
- [Immunohistochemistry](#)
- [Immunofluorescence](#)
- [Immunoprecipitation](#)
- [Flow Cytometry](#)
- [Cell Culture](#)

**AFP Antibody - Images**

Western blot analysis of AFP expression in HepG2 cell lysate.